

- Jürgen E. Reinhardt -

Querne-Marsch

- Marsch -



Artikel-Nr. 0142

Arrangement für Blasorchester



- Kleine Besetzung -



Die vorliegende Ausgabe enthält folgende Stimmen:

Direktion in C
1. Flügelhorn in Bb (Dir.)
2. Flügelhorn in Bb
1. Trompete in Bb
1. Klarinette in Bb
2. Klarinette in Bb

Klarinette in Eb
Flöte in C
Bariton in C/Bb
Tenorhorn
Tenorhorn 2 in Bb
Tenorhorn 3 in Bb

Horn 1 Eb
Horn 2 Eb
1. Posaune in C/Bb
2. Posaune in C/Bb
Tuba 2 C/Bb
Tuba 1
Schlagzeug

© Copyright 2014 by Jürgen E. Reinhardt
Schubart- von- Kleefeld- Str. 27, D 06686 Lützen, Tel.: 034444-21091, blasmusik@juergenreinhardt.de

Vervielfältigung verboten!

www.blasmusiknoten.eu

Alle Rechte vorbehalten!

Querne-Marsch

Direktion in C

Marsch

Jürgen E. Reinhardt

Measures 1-6 of the score. The music is in 2/4 time with a key signature of two flats (B-flat and E-flat). The first system consists of two staves: a treble staff and a bass staff. The treble staff begins with a dynamic marking of *f* (forte) and contains a melodic line with eighth and sixteenth notes. The bass staff provides a rhythmic accompaniment with chords and single notes. A dynamic marking of *mf* (mezzo-forte) appears in the second measure of the treble staff.

Measures 7-12 of the score. The treble staff features a trill (tr) in measure 8. The bass staff continues with a steady accompaniment. The key signature remains two flats.

Measures 13-18 of the score. The treble staff has a fermata over the final note of measure 14. The bass staff continues with its accompaniment. The key signature remains two flats.

Measures 19-25 of the score. This system includes a first ending (1.) and a second ending (2.). The first ending leads back to the beginning of the piece. The second ending leads to a section with a dynamic marking of *f*. The bass staff features triplet markings (3) in measures 21, 22, and 23.

Measures 26-31 of the score. The treble staff has a fermata over the final note of measure 27. The bass staff continues with its accompaniment. The key signature remains two flats.

© Copyright 2014 by Jürgen E. Reinhardt
Schubart- von- Kleefeld- Str. 27, D 06686 Lützen, Tel.: 034444-21091, blasmusik@juergenreinhardt.de

33

1. *tr* 2.

This system contains measures 33 through 40. It features a treble and bass staff. The treble staff has a first ending bracket over measures 37-38, followed by a second ending. A trill (*tr*) is marked above a note in measure 38. The bass staff includes a triplet of eighth notes in measure 39.

Trio

40

sfz *p - mf - f*

This system contains measures 40 through 45. It features a treble and bass staff. A section marked **Trio** begins in measure 40. Dynamics include *sfz* in measure 40 and *p - mf - f* in measure 41. A repeat sign with first and second endings is present in measure 41.

46

This system contains measures 46 through 51. It features a treble and bass staff with various rhythmic patterns and articulations.

52

This system contains measures 52 through 57. It features a treble and bass staff with various rhythmic patterns and articulations.

58

3 3 3 3

This system contains measures 58 through 63. It features a treble and bass staff. The treble staff includes several triplet markings (3) over eighth notes in measures 59, 60, 61, and 62. A trill (*tr*) is also present in measure 59.

64 *tr* 3

System 1: Measures 64-69. Treble clef with a trill (tr) over a triplet of eighth notes. Bass clef accompaniment with chords and eighth notes.

70 3 fine *mf*

System 2: Measures 70-75. Treble clef with a triplet of eighth notes. Bass clef accompaniment. Dynamics include *mf* and *fine*.

76 Klar

System 3: Measures 76-81. Treble clef with a clarinet (Klar) entry. Bass clef accompaniment.

82 Klar

System 4: Measures 82-87. Treble clef with a clarinet (Klar) entry. Bass clef accompaniment.

88 D.S.al fine

System 5: Measures 88-89. Treble clef with a clarinet (Klar) entry. Bass clef accompaniment. Ends with a double bar line and a repeat sign.

Querne-Marsch

Flügelhorn 1 Bb (Dir.)

Jürgen E. Reinhardt

Musical score for Flügelhorn 1 Bb (Dir.) from measures 1 to 33. The score is in 2/4 time and B-flat major. It begins with a first ending bracket over measures 1-4, marked *f*. A second ending bracket covers measures 5-8, marked *mf*. The piece continues with various rhythmic patterns, including eighth and sixteenth notes, and rests. Measure numbers 1, 9, 17, 25, and 33 are indicated at the start of their respective staves.

Trio

Musical score for the Trio section from measures 40 to 88. The section begins at measure 40 with a repeat sign and a dynamic marking of *p - mf - f*. It features a variety of rhythmic figures, including triplets and sixteenth-note runs. Measure numbers 40, 48, 56, 64, 72, 80, and 88 are marked. At measure 72, the word "Klar" is written above the staff, and "fine" is written below. The section concludes at measure 88 with a repeat sign and the instruction "D.S. al fine".

Querne-Marsch

Flügelhorn 2 Bb

Jürgen E. Reinhardt

1 *f* *mf*

9

17 *f*

25

33

Detailed description: This section contains the first 33 measures of the piece. It begins with a treble clef, a key signature of two flats (Bb), and a 2/4 time signature. The music starts with a dynamic of *f* (forte) and transitions to *mf* (mezzo-forte). There are several first and second endings marked with '1.' and '2.'. The piece concludes this section with a double bar line and a key signature change to one flat (B).

Trio

40 *sfz* *p - mf - f*

48

56

64

72 *mf* fine

83 *D.S. al fine*

Detailed description: The Trio section begins at measure 40 with a section sign (§) and a dynamic of *sfz* (sforzando). The dynamics fluctuate between *p* (piano), *mf* (mezzo-forte), and *f* (forte). The section includes several triplet markings and ends at measure 83 with a section sign (§) and the instruction 'D.S. al fine' (Da Capo al fine).

Querne-Marsch

Trompete 1 Bb

Jürgen E. Reinhardt

1 *f* *mf*

9

17 *f*

25

33

Trio

40 *sfz* *p - mf - f* 1. x tacet

48

56 *tutti*

64

72 *mf* fine 4

83 4 D.S. al fine

© Copyright 2014 by Jürgen E. Reinhardt

Schubart- von- Kleefeld- Str. 27, D 06686 Lützen, Tel.: 034444-21091, blasmusik@juergenreinhardt.de

Querne-Marsch

Tenorhorn

Jürgen E. Reinhardt

1 *f* *p - mf*

9

17 *f* *soli* 1. 2. 3.

25

33 1. 2. 3.

Detailed description: This section contains the first 33 measures of the Tenorhorn part. It begins with a dynamic of *f* and changes to *p - mf*. The music features various rhythmic patterns, including eighth and sixteenth notes, and rests. There are two first and second endings at measures 17-18 and 31-32. Trills and triplets are indicated with '3' and a slur. The key signature has one flat (B-flat).

Trio

40 *sfz* *p - mf - f*

48

56 3 3 3 3

64 3 3 3 3

72 *mf* *fine*

80

88 *D.S. al fine*

Detailed description: This section contains measures 40 to 88 of the Tenorhorn part. It starts with a dynamic of *sfz* and changes to *p - mf - f*. A repeat sign with a double bar line and a double bar line with a repeat sign is used. The music includes many triplets, indicated by '3' and a slur. The key signature changes to two flats (B-flat and E-flat) at measure 40. The section ends with a *fine* marking and a *D.S. al fine* instruction. The key signature returns to one flat (B-flat) at measure 80.

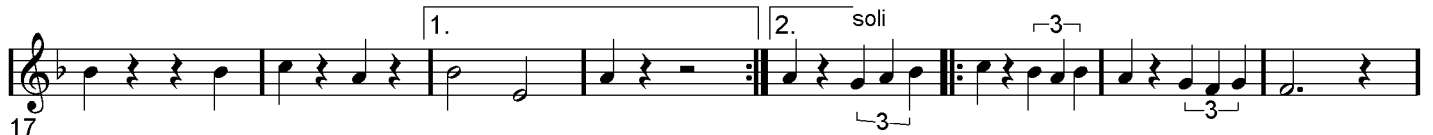
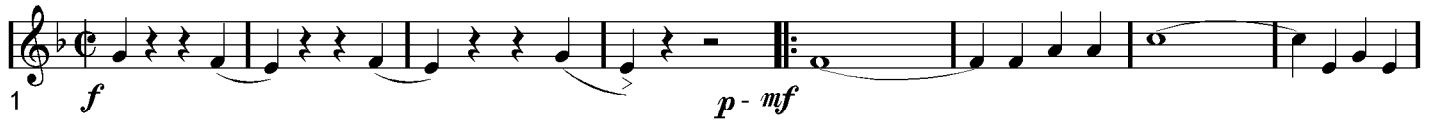
© Copyright 2014 by Jürgen E. Reinhardt

Schubart- von- Kleefeld- Str. 27, D 06686 Lützen, Tel.: 034444-21091, blasmusik@juergenreinhardt.de

Querne-Marsch

Bariton Bb

Jürgen E. Reinhardt



Trio



Querne-Marsch

Bariton C

Jürgen E. Reinhardt

1 *f* *p - mf*

9

17 *f*

1. 2. soli 3

25

33

1. 2. 3

Trio

40 *sfz* *p - mf - f*

48

56

3

64

3 3 3 3

72 *mf*

fine

80

88 *D.S. al fine*

Querne-Marsch

Tuba 2

Jürgen E. Reinhardt

1 *f* *mf*

9

17 *f* soli

25

33

Trio

40 *sfz* *p - mf - f*

48

56

64

72 *mf* fine

80

88 D.S. al fine

Querne-Marsch

Tuba 1

Jürgen E. Reinhardt

1 *f* *mf*

9

17 1. 2. soli *f*

25

33 1. 2.

Trio

40 § *sfz* *p-mf-f*

48

56

64

72 ^ *mf* *fine*

80

88 § *D.S. al fine*

Querne-Marsch

Tuba Bb

Jürgen E. Reinhardt

1 *f* *mf*

9

17 1. 2. *soli* *f*

25

33 1. 2. *f*

Trio

40 *sfz* *p-mf-f*

48

56

64

72 *mf* *fine*

80

88 *D.S. al fine*

© Copyright 2014 by Jürgen E. Reinhardt
Schubart- von- Kleefeld- Str. 27, D 06686 Lützen, Tel.: 034444-21091, blasmusik@juergenreinhardt.de

Querne-Marsch

Klarinette 1 Bb

Jürgen E. Reinhardt

1 *f* *mf* *tr*
9
17 *f*
25
33

Trio

40 *sfz* *p - mf - f*
48
56 *tr*
64 *tr* 3
72 *fine* *mf* 4 *soli* 4
86 *D.S. al fine*

Querne-Marsch

Klarinette 2 Bb

Jürgen E. Reinhardt

1 *f* *mf* *tr*

9

17 *f*

25

33

Detailed description: This section contains the first 33 measures of the piece. It begins with a treble clef and a key signature of one flat. The music features a variety of rhythmic patterns, including eighth and sixteenth notes, and rests. Dynamic markings include *f* (forte) and *mf* (mezzo-forte). A trill is indicated by a 'tr' symbol with a wavy line above it. First and second endings are marked with '1.' and '2.' above the staff lines.

Trio

40 *sfz* *p - mf - f*

48

56 *tr*

64 *tr* 3

72 *mf* 4 *soli* 4

86 *D.S.al fine*

Detailed description: This section contains measures 40 through 86. It starts with a treble clef and a key signature of two flats. The music is marked with a section symbol (§) and dynamic markings *sfz* (sforzando), *p* (piano), *mf* (mezzo-forte), and *f* (forte). A *soli* marking is present above the staff. Trills are indicated with 'tr' and wavy lines. A triplet of eighth notes is marked with a '3' and a bracket. The section concludes with a section symbol (§) and the instruction 'D.S.al fine' (Da Capo al fine).

Querne-Marsch

Klarinette 3 Bb

Jürgen E. Reinhardt

1 *f* *mf* *tr*

9

17 *f*

25

33 *tr*

Trio

40 *sfz* *p - mf - f*

48

56 *tr*

64 *tr* 3

72 *fine* *mf* 4 *soli* 4

86 *D.S. al fine*

Querne-Marsch

Klarinette Eb

Jürgen E. Reinhardt

Musical score for Clarinet Eb, measures 1-33. The score is in 2/4 time and features a key signature of one flat. It begins with a first ending bracket over measures 1-4, marked *f*. A second ending bracket covers measures 5-8, marked *mf*. The piece concludes with a trill in measure 33, marked *tr*.

Musical score for Trio, measures 40-86. The score is in 2/4 time and features a key signature of one flat. It begins with a first ending bracket over measures 40-43, marked *sfz*. A second ending bracket covers measures 44-47, marked *p - mf - f*. The piece concludes with a trill in measure 86, marked *tr*. The score includes dynamic markings such as *mf*, *f*, and *mf*, and performance instructions like *fine*, *soli*, and *D.S.al fine*.

Querne-Marsch

Flöte C

Jürgen E. Reinhardt

1 *f* *mf* *tr*

9

17

25

33

Trio

40 *sfz* *p - mf - f*

48

56 *tr*

64 *tr* *3*

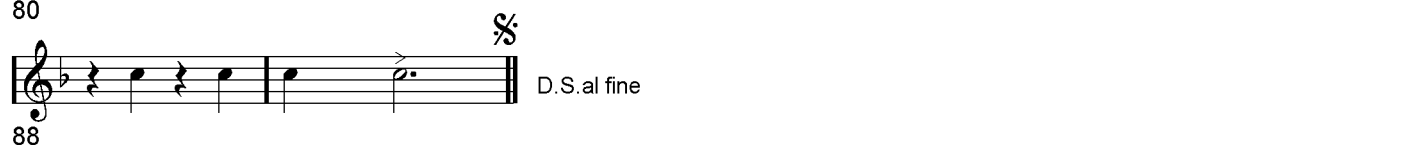
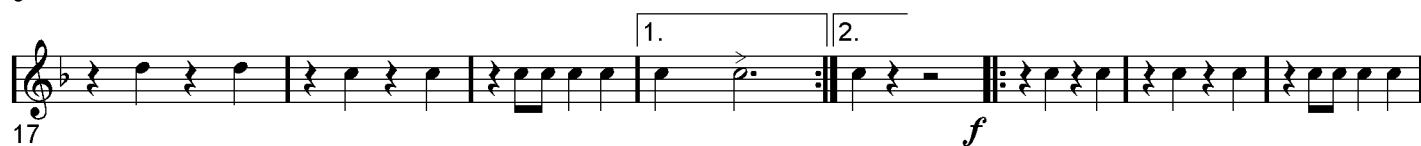
72 *fine* *mf* 4 *soli* 4

86 *D.S. al fine*

Querne-Marsch

Tenorhorn 2

Jürgen E. Reinhardt



Querne-Marsch

Tenorhorn 3

Jürgen E. Reinhardt

1 *f* *mf*

9

17 *f*

25

33

Trio

40 *sfz* *p - mf - f*

48

56

64

72 *mf* *fine*

80

88 D.S.al fine

Querne-Marsch

Horn 1 Eb

Jürgen E. Reinhardt

1 *f* *mf*

9

17 *f*

25

33

1. 2.

1. 2.

Detailed description: This section contains the first 33 measures of the Horn 1 Eb part. It begins with a treble clef and a common time signature. The first measure is marked with a forte (*f*) dynamic. The music features a mix of quarter and eighth notes, with some rests. A first ending bracket spans measures 17-18, and a second ending bracket spans measures 19-20. A forte (*f*) dynamic is also present in measure 18. The section concludes with a double bar line and repeat signs.

Trio

40 *sfz* *p - mf - f*

48

56

64

72 *mf*

80

88 D.S. al fine

Detailed description: This section contains the Trio part, starting at measure 40. It begins with a treble clef and a key signature of one flat (B-flat). The first measure is marked with a sforzando (*sfz*) dynamic. The music is characterized by a steady eighth-note pattern. A dynamic range of *p - mf - f* is indicated. A repeat sign with first and second endings is present at measure 44. The section ends at measure 88 with a double bar line and the instruction 'D.S. al fine'.

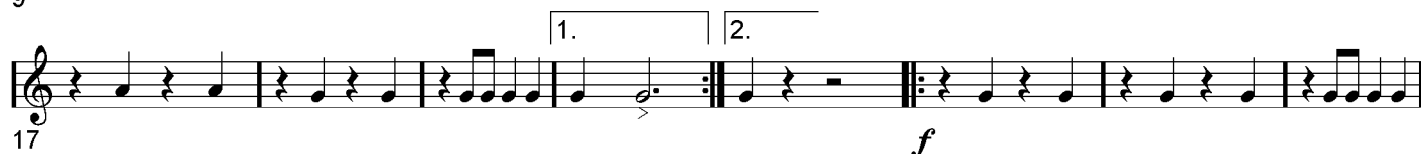
© Copyright 2014 by Jürgen E. Reinhardt

Schubart- von- Kleefeld- Str. 27, D 06686 Lützen, Tel.: 034444-21091, blasmusik@juergenreinhardt.de

Querne-Marsch

Horn 2 Eb

Jürgen E. Reinhardt



Trio



© Copyright 2014 by Jürgen E. Reinhardt

Schubart- von- Kleefeld- Str. 27, D 06686 Lützen, Tel.: 034444-21091, blasmusik@juergenreinhardt.de

Querne-Marsch

Posaune 1 C

Jürgen E. Reinhardt

1 *f* *mf*

9

17 *f*

25

33

Trio

40 *sfz* *p - mf - f*

48

56

64

72 *fine* *mf*

80

88 D.S.al fine

© Copyright 2014 by Jürgen E. Reinhardt

Schubart- von- Kleefeld- Str. 27, D 06686 Lützen, Tel.: 034444-21091, blasmusik@juergenreinhardt.de

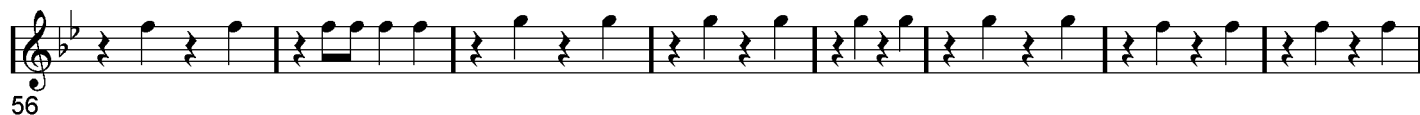
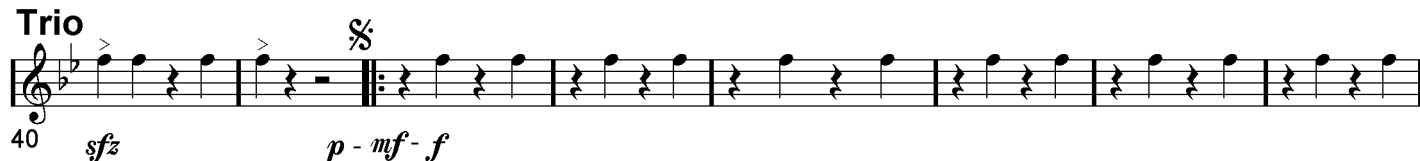
Querne-Marsch

Posaune 1 Bb

Jürgen E. Reinhardt



Trio



Querne-Marsch

Posaune 2 C

Jürgen E. Reinhardt

1 *f* *mf*

9

17 *f*

25

33

Trio

40 *sfz* *p - mf - f*

48

56

64

72 *mf*

80

88 *mf* D.S.al fine

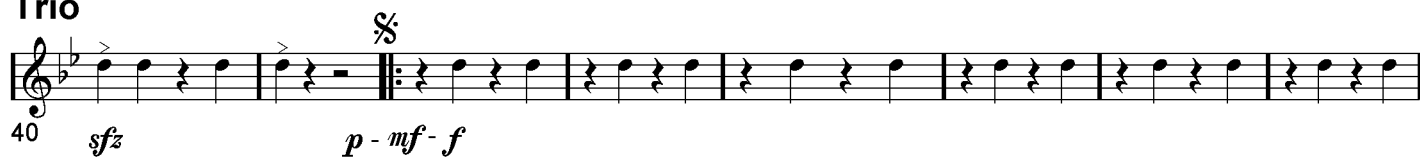
Querne-Marsch

Posaune 2 Bb

Jürgen E. Reinhardt



Trio



© Copyright 2014 by Jürgen E. Reinhardt

Schubart- von- Kleefeld- Str. 27, D 06686 Lützen, Tel.: 034444-21091, blasmusik@juergenreinhardt.de

Querne-Marsch

Schlagzeug

Jürgen E. Reinhardt

1 *f* *mf* *f*

9

17 1. 2. *f*

25

33 1. 2.

Detailed description: This section contains the first 33 measures of the drum part. It is written in bass clef with a common time signature. The music consists of rhythmic patterns of eighth and sixteenth notes, often beamed together. Dynamic markings include *f* (forte), *mf* (mezzo-forte), and *f* (forte) again. There are two first and second endings marked with '1.' and '2.' above the staves.

Trio

40 *sfz* *p - mf - f*

48

56

64

72 *mf* *mf*

80

88 D.S. al fine

Detailed description: This section contains measures 40 through 88. It begins with a double bar line and a repeat sign. The music features a consistent rhythmic pattern of eighth notes. Dynamic markings include *sfz* (sforzando), *p - mf - f* (piano to mezzo-forte to forte), and *mf* (mezzo-forte). The section concludes with a double bar line and the instruction 'D.S. al fine'.